

SUSTAINABLE BUSINESS NETWORK'S
MILLION METRES STREAMS PROJECT



Impact Report

2014 – 2022



Sustainable
Business
Network



Million Metres
STREAMS PROJECT

Million Metres Streams Project

A Sustainable Business Network initiative



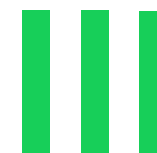
Back in 2014, the Sustainable Business Network (SBN) created the country's first crowdfunding platform for waterway restoration. SBN's Million Metres Streams Project has been on a mission to restore Aotearoa New Zealand's rivers, streams, lakes and wetlands ever since.

The project has enabled landowners and community groups across the country to set up and run crowdfunding campaigns. Million Metres connects them with advice, expertise, resources and funds to plan and carry out their waterway restoration projects.

Since its creation, the project has raised more than \$2.3 million. This has enabled the planting of more than half a million plants and trees across more than 70 project sites.

Thank you to all the generous individuals and businesses that have donated to Million Metres. None of this could have been achieved without you.

This report highlights our key achievements over the past eight years of crowdfunding. It also outlines how our project is shifting into a new way of working. Join us for the next chapter!



Our Impact

2014-2022



Check out all we have accomplished over the past eight years of crowdfunding!

Thanks to all our amazing supporters that made this possible.

Million Metres Streams Project enabled the planting of:

550,000+

NATIVE TREES AND PLANTS

1,000,000M²

AREA RESTORED WITH NATIVE PLANTS

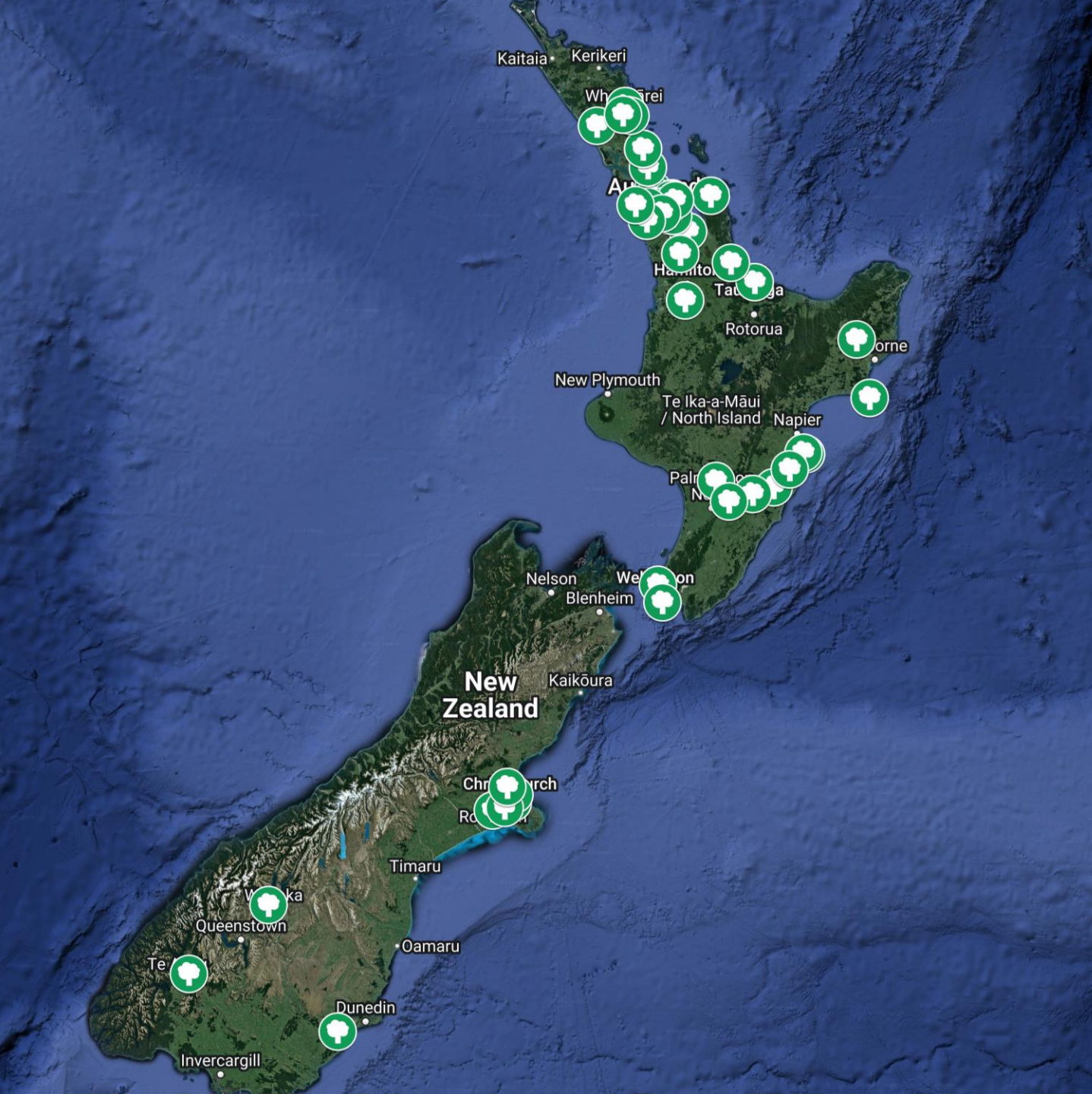
\$2.35MILLION

RAISED FOR WATERWAY RESTORATION



80KM+

WATERWAY RESTORATION FUNDED



Our Project Partners



Thank you to all the amazing partners
that put in the hard work on the ground!

Since 2014, Million Metres has partnered
with:

43

LANDOWNERS AND
COMMUNITY GROUPS

AND FUNDRAISED FOR

72

PLANTING
PROJECTS

Million Metres Fundraisers 2014 – 2022

2014

- + Whitestone River Tributaries, Dale Farm, Southland
\$25,200 raised; 1,640 trees planted
- + Waikohu River Tributary, The Savage's, Gisborne
\$5,400 raised; 605 trees planted

2015

- + Kiwitea River Tributary, Hare Farm, Manawatu-Whanganui
\$18,000 raised; 2,202 trees planted
- + Whangawehi Catchment Management Group, Hawke's Bay
 - Taharoa/Grandy Lake Forest: \$30,516 raised; 6,648 trees planted
 - Pongaroa Station: \$52,795 raised, 15,384 trees planted
- + Belmont Stream, The Woodridge Planters, Wellington
\$22,840 raised, 3,307 trees planted
- + Tomarata Farms, The Taylor's, Auckland
\$21,546 raised, 10,949 trees planted

2016

- + Poulton's Bush, The Poulton's, Manawatu-Whanganui
\$35,689 raised, 3,814 trees planted
- + Avon-Ōtākaro River, Avon-Ōtākaro Network, Canterbury
\$16,915 raised, 2,858 trees planted
- + Horseshoe Lake, The Hart's, Hawke's Bay
\$31,705 raised, 7,730 trees planted
- + Stackwoods Bend - Huritini River, Te Ara Kākāriki Greenway Trust, Canterbury
\$10,048 raised, 810 trees planted
- + Rosebank Peninsula, Whau River Catchment Trust, Auckland
\$49,999 raised, 5,040 trees planted

2017

- + Mangapapa Stream, Ratahiwi Farm, Horizon Farming Ltd, Manawatu-Whanganui
\$28,519 raised, 4,634 trees planted
- + Maraetotara River, Maraetotara Tree Trust, Hawke's Bay
\$25,848 raised, 7,550 trees planted

- + Love our Wetlands, Waiheke Resources Trust, Auckland
\$47,720 raised, 1,800 trees planted
- + WAI Wānaka/Te Kākano Aotearoa
 - In Memory of Maggie Lawton: \$10,000 raised, 176 trees planted
 - Love Lake Wānaka: \$60,000 raised, 4,545 trees planted
- + Te Onetea Stream, Waikato RiverCare, Waikato
\$25,013 raised, 2,203 trees planted
- + Waipuka Stream, Pukepuke Tangiora Trust, Hawke's Bay
\$16,503 raised, 2,999 trees planted
- + Silverstream, Waimakiriri District Council, Canterbury
\$24,500 raised, 1,167 trees planted
- + Tahawai Stream, Uretara Estuary Managers, Bay of Plenty
\$30,138 raised, 9,300 trees planted
- + Otara Creek, Otara Waterways and Lake Trust, Auckland
\$33,875 raised, 3,190 trees planted



- + Matuku Link, Matuku Reserve Trust, Auckland
\$18,750 raised, 3,443 trees planted
- + Wairoa River at Clevedon Wharf, Friends of Te Wairoa Catchment, Auckland
\$22,294 raised, 2,075 trees planted
- + Mill Stream, Tributary of the Mahurangi River, Auckland
\$20,136 raised, 6,926 trees planted
- + Big Bay Pond, The Blake's, Auckland
\$8,699 raised, 1,500 trees planted

2018

- + Wainuiomata River, Friends of Baring Head, Wellington
- 2018 planting season: \$4,805 raised, 1,500 trees planted
- 2019 planting season: \$47,152 raised, 3,228 trees planted
- + Otaika Creek, Whitebait Connection, Whangārei
\$4,140 raised, 400 trees planted
- + Tomarata Farms, The Taylor's, Auckland
\$19,200 raised, 10,108 trees planted

- + Rangihoua Wetland, Waiheke Resources Trust, Auckland
\$50,102 raised, 2,700 trees planted
- + Northern Wairoa, Waimā Waitai Wiaora, Northland
\$60,012 raised, 100,000 trees planted
- + Stackwoods Bend II, Te Ara Kākāriki Greenway Trust, Canterbury
\$9,747 raised, 1,220 trees planted
- + Lower Mangapiko Stream, Mangapiko Stream Care Group, Waikato
\$50,504 raised, 11,200 trees planted
- + Pōrangahau River Tributary, The Clark's, Hawke's Bay
\$29,000 raised, 7,167 trees planted
- + Silverstream, Fish and Game, Canterbury
\$45,307 raised, 2,845 trees planted
- + Whāngarei Harbour Catchment, Whitebait Connection, Northland
\$15,347 raised, 4,848 trees planted
- + Omaru Stream -Tāmaki Estuary, Conservation Volunteers NZ, Auckland
\$36,764 raised, 4,140 trees planted

- + Love Lake Wānaka II, WAI Wānaka / Te Kākano Aotearoa, Otago
\$60,000 raised, 4,500 trees planted

2019

- + Rangihoua Wetland II, Waiheke Resources Trust, Auckland
\$27,166 raised, 1,724 trees planted
- + Te Mangatupae Stream, Whangawehi Catchment Management Group, Hawke's Bay
\$10,845 raised, 20,200 trees planted
- + Wairarapa Stream, Conservation Volunteers NZ, Canterbury
\$26,661 raised, 2282 trees planted
- + Waitekuri Wetland, Waikato Regional Council, Waikato
\$21,166 raised, 4,180 trees planted
- + Tomarata Farm, The Taylor's, Auckland
\$233,323 raised, 26,355 trees planted
- + Matuku Link, Matuku Reserve Trust, Auckland
\$15,645 raised, 2,230 trees planted
- + Wairoa River, Friends of Te Wairoa Catchment, Auckland
\$29,136 raised, 2,470 trees planted

- + Papakura Stream-Brookby, Conservation Volunteers NZ, Auckland
\$36,471 raised, 5,378 trees planted
- + Mount Albert Grammar School - Farm Sustainable Education Project, Auckland
\$16,500 raised, 2,000 trees planted
- + Te Nohoaka o Tukiauau, Sinclair Wetlands, Otago
\$47,300 raised, 6,362 trees planted
- + Wairoa River and its tributaries, Waimā Waitai Waiora partnership, Northland
\$60,000 raised, 133,000 trees planted
- + Wainuiomata River, Friends of Baring Head, Wellington
\$33,204 raised, 7,141 trees planted
- + Matuku Link, Matuku Reserve Trust, Auckland
\$35,100 raised, 2,000 trees planted
- + Kaiate Falls, Bay of Plenty
\$52,841 raised, 41,354 trees planted
- + Cardrona, WAI Wānaka / Te Kākano Aotearoa, Otago
\$60,000 raised, 1,038 trees planted

2020

- + Blake Wetland, Big Bay, Auckland
\$9,100 raised, 1,120 trees planted
- + Taramaire Stream, The Levers, Waikato
\$31,787 raised, 5,095 trees planted
- + Ko Piritahi Te Awa, Piritahi Marae, Auckland
\$12,218 raised, 700 trees planted
- + Wainuiomata River, Friends of Baring Head, Wellington
\$40,356 raised, 8,400 trees planted
- + Te Aroha Avenue and Hekerua Bay, Waiheke Island, Auckland
\$31,667 raised, 2,156 trees planted
- + Mahia Peninsula at Pahnui Farm, Whangawehi Catchment Management Group, Hawke's Bay
\$41,000, 10,000 trees planted
- + Love our Wetlands, Waiheke Resources Trust, Auckland
\$62,032 raised, Trees to be planted in 2022
- + Ngātaringa Eco-corridor, Restoring Takarunga Hauraki, Devonport, Auckland
\$26,968, 1,500 trees planted

2021

- + Avoca Valley Stream, Summit Road Society, Canterbury
- 2021: \$12,041 raised, 4,500 trees planted
- 2022: \$9,695 raised, Trees to be planted in 2022
- + Love our Alpine Lakes, WAI Wānaka/Te Kākano Aotearoa, Otago
\$60,000 raised, 2,106 trees planted
- + Restore Hibiscus & Bays, Auckland
- Campbells Bay: \$9,930 raised, 639 trees planted
- Long Bay-Awaruku Stream: \$31,972 raised, Trees to be planted in 2022
- Taiaotea-Rothesay Bay: \$10,120 raised, 3,787 trees planted
- + Te Nohoaka o Tukiauau, Sinclair Wetlands II, Otago
\$57,750 raised, Trees to be planted in 2022/2023
- + Whāngarei Urban Awa, Northland Regional Council
\$15,649 raised, Trees to be planted in 2022/2023
- + Wairoa River, Waimā Waitai Waiora, Northland
\$42,555 raised, Trees to be planted in 2022
- + Wainuiomata River, Friends of Baring Head, Wellington
\$7,058 raised, Trees to be planted in 2022



Project Successes



Thanks to the support of generous individuals and businesses, these 72 Million Metres projects have been able to make great progress towards the restoration of Aotearoa New Zealand's waterways.

Donations through Million Metres have supported the cost of the native plants and trees. They've also helped pay for the labour and material costs associated with planting and maintenance.

Over the years, our project partners have taken photos of the growth of their plants and monitored survival rates. Some have also monitored biodiversity and water quality changes at their sites.

Here are some examples of the great changes being made.



Image: John Taylor
showing plant growth
at Tomarata Farms, Auckland

MARAETOTARA TREE TRUST,
HAWKE'S BAY
2017 FUNDRAISER

“

The native bird population in an extended area surrounding the valley has exploded as a result of the various initiatives undertaken by the Trust and others in this catchment and nearby.

The partnership with Million Metres has proved to be a very successful one. Apart from the more obvious benefits from the plantings we were also able to engage with schools, the community and the staff of commercial sponsors and let them feel just what it is like to be involved in an environmental project of this type.”

ALAN, MARAETOTARA TREE TRUST



Image: Avon-Ōtākaro River Photo-points
Oct 2014 vs March 2018

AVON-ŌTĀKARO RIVER,
CANTERBURY
2016 FUNDRAISER

“

Thank you so much for your donations, which helped us put more than 7,500 plants in the ground and maintain them to maturity. We now have a significant native wetland area, which is an exemplar of what can be achieved throughout much of the red zoned Ōtākaro Avon River Corridor.

The regeneration plan for the corridor is now approved. It aligns closely with our vision for a city-to-sea multi-purpose urban river park with the maximum possible restoration of native habitat. It will enhance biodiversity, river water quality and mahinga kai values.”

EVAN, AVON-ŌTĀKARO NETWORK



WAIROA RIVER, CLEVEDON, AUCKLAND 2019 FUNDRAISER

“

The site is looking great, with the plants now established and thriving. The planting has enhanced the riverbank and reserve greatly, and is enjoyed regularly by the community.”

GLENN, FRIENDS OF TE WAIROA CATCHMENT

STACKWOODS BEND, CANTERBURY 2016 FUNDRAISER

“

The riparian strip is now cloaked in native vegetation, with *Carex secta* providing habitat for fish and invertebrates in the Huritini awa. Plants higher up the river bank are maturing into a haven for native bird, invertebrate and lizard species. Ladbroke's school are very proud of this planting site, and so are we!”

LETITIA, TE ARA KĀKĀRIKI



Before



After

PORANGAHAU RIVER, HAWKE'S BAY 2018 FUNDRAISER

“

The plantings have survived extremely well and look amazing! The number of Kererū hanging around the tree Lucerne and Kowhai trees is very satisfying to see. It's still early stages but we are excited to watch the bird life increase.”

SAM CLARK,
CLARK FAMILY FARM

Image: Porangahau River Photo-points
2018 vs 2021

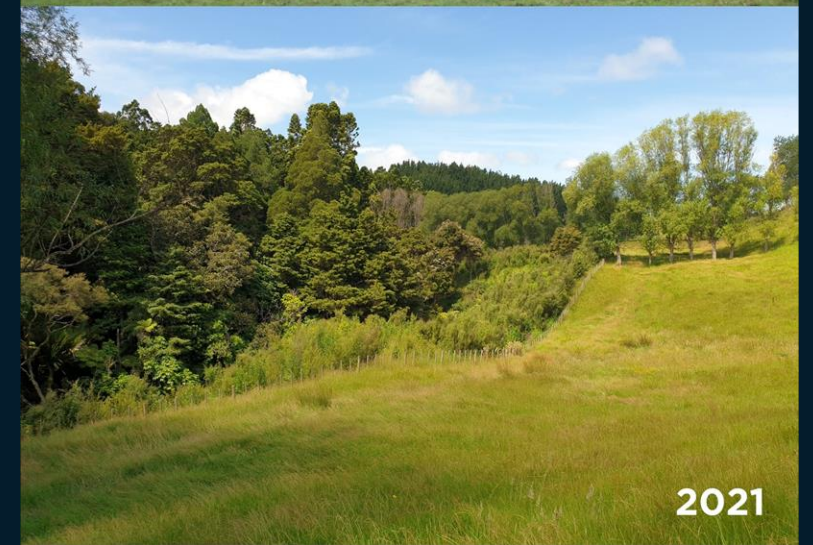


MILL STREAM, WARKWORTH, AUCKLAND 2018 FUNDRAISER

“

The area is regenerating well. Trees are now 1-3m tall and a diverse range of species have survived. The infill planting and weed control have allowed the area to flourish right across the planting area. It is wonderful to walk past the planted area now and see all the beautiful trees and try and imagine that it used to be just pasture with cattle in the degraded wetland.”

CHRIS, QEII NATIONAL TRUST



Images: Mill Stream Photo-points

WAINUIOMATA RIVER, BARING HEAD, WELLINGTON 2018-2022 FUNDRAISERS

“

The 2018 plantings are now large and dominating the site! The 2019 planting area is also now a sea of large, healthy flax plants that is visible from the road. There is now sufficient shelter from these older plantings to provide shade and wind protection for new species.”

PAULA, FRIENDS OF BARING HEAD



Image: Jo Greenman showing plant growth at Wainuiomata River



Image: Waiheke Resources Trust Photo-points

LOVE OUR WETLANDS, WAIHEKE RESOURCES TRUST AUCKLAND 2017-2022 FUNDRAISERS

“

In 2015, Love Our Wetlands planted our very first harakeke and tī kōuka in the once weed-ridden riparian edge at the back of Onetangi Sports Park, Rangihoua. This year these native trees are in full bloom. Pīwakawaka and tui abound. Stream edges are protected and the community connected through the mahi that they have contributed to these areas as volunteers.”

KRISTIN, WAIHEKE RESOURCES TRUST



Where we are heading



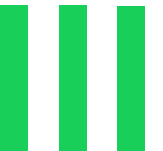
The impact of the pandemic has changed the way many things are working. That includes life here at the Sustainable Business Network (SBN). We're moving on from crowdfunding to focus on building larger and more impactful business partnerships to multiply investment in nature regeneration.

The creation of the Government's Jobs for Nature Fund changed the game for us. In the last two years, SBN has been able to channel another \$6 million into nature regeneration work, thanks to funding through the Department of Conservation. It has allowed us to support 14 community and mana whenua groups in our network to significantly extend the scale and scope of their work.

We supported our partners to create jobs in nature regeneration in addition to working with volunteers. This investment has provided short-term employment and experience to more than a 150 people up and down the country. It's set to generate more than 100,000 hours of conservation work. This includes site preparation, planting, weeding and maintenance as well as pest control, native plant propagation and boardwalk building.

This support has increased positive outcomes for waterways, biodiversity and communities, providing meaningful employment in nature-based roles and skill development.

We're now intent on using this new momentum to engage more business and philanthropic organisations, to support a huge extension and expansion of this work.



Continued commitment to waterway restoration



Now we are scaling up our impact by working with business, community, philanthropy and government to speed up the regeneration of nature together.

Our unique contribution has always been through our business network. SBN is the country's largest and longest standing sustainable business group. We're working to leverage the full power of our network of more than 500 organizations into nature regeneration.

We're seeking business investment in these key project areas:



Million Metres Streams

We are on a mission to restore the nation's rivers, streams, lakes and wetlands with native plants and trees. Our vision is for a future in which Aotearoa's waterways are restored as vital havens for wildlife. Where it is once again normal to swim in them and drink from them.

[Find out more](#)



Protecting and restoring Tikapa Moana/the Hauraki Gulf

We're on a mission to improve the mauri, the life-giving essence of the Hauraki Gulf (Tikapa Moana or Te Moana-nui-a-Toi).

[Find out more](#)



Puhinui Regeneration Project

We're helping to restore the mauri of the land, waters and communities of the Puhinui catchment. We're creating and financing jobs for local rangatahi that contribute to a restoration vision led by mana whenua and the local community.

[Find out more](#)

Thank You!



A huge thank you to everyone that supported Million Metres and our crowdfunding model!

We look forward to continuing to working with you to restore Aotearoa's waterways.



Learn more about our work:
sustainable.org.nz/projects/million-metres-streams/

Contact us: info@millionmetres.org.nz



Special thanks to the following people and organisations:

- The Field Partners across the country who have provided resources and expertise to Million Metres projects to ensure their success.
- Rebecca Keen and Andrew Clark for unstinting support and vision.
- The Million Metres Advisory Board for their support and advice over the years!
- The following organisations for helping to fund our work.



THE BODY SHOP

SUSTAINABLE BUSINESS NETWORK'S
MILLION METRES STREAMS PROJECT

Impact Report

2014 – 2022



Thank You!

